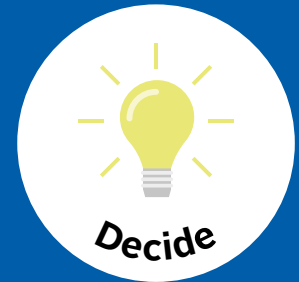
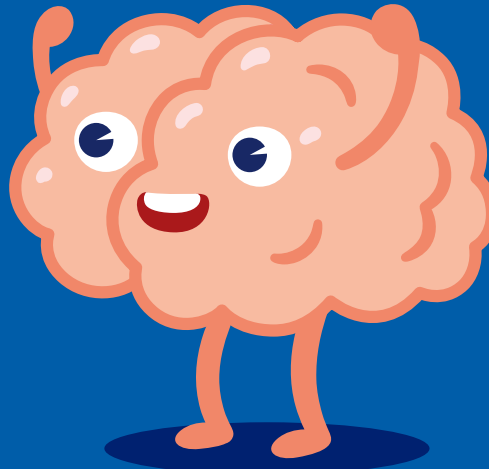


WHAT CAN THE BRAIN DO?



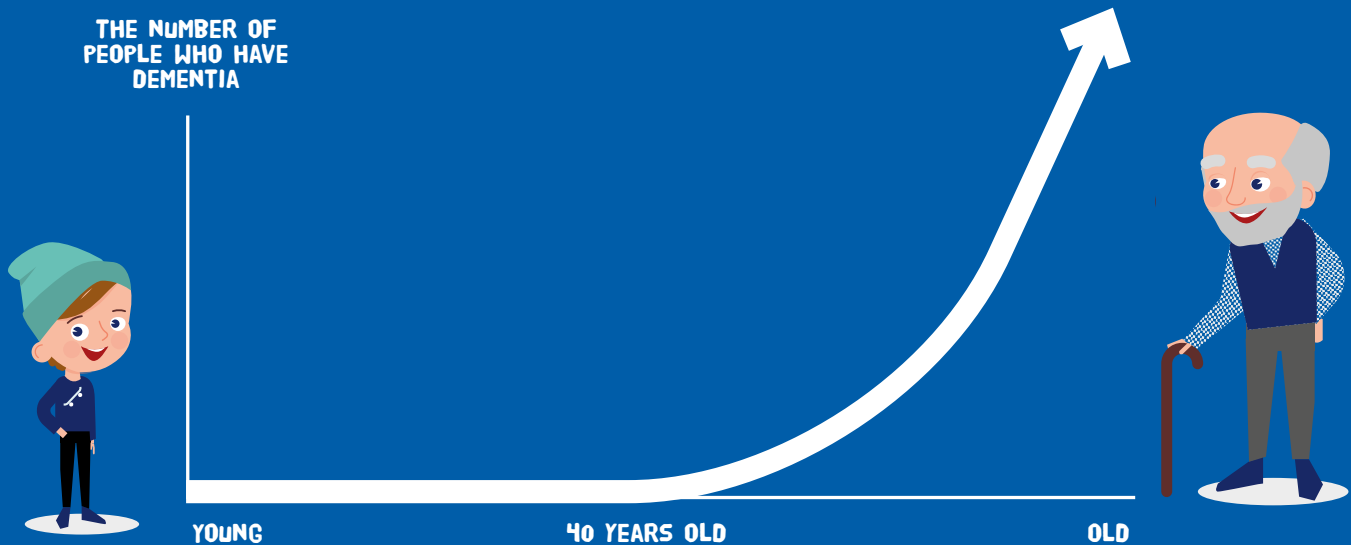
WHAT CAUSES DEMENTIA?

Dementia is caused by brain cells in different parts of the brain that gradually stop working.



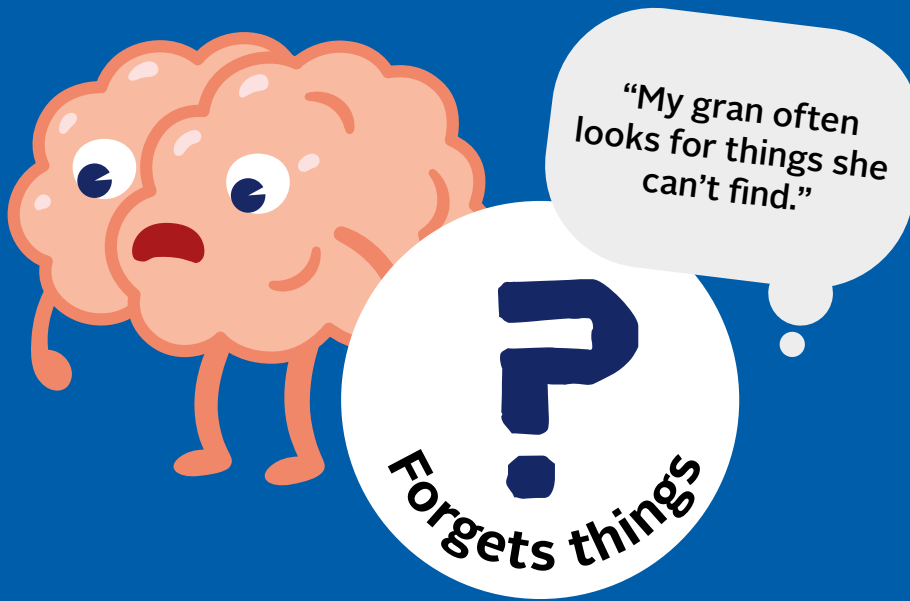
DEMENTIA HAPPENS A LOT MORE IN OLDER PEOPLE

THE NUMBER OF PEOPLE WHO HAVE DEMENTIA

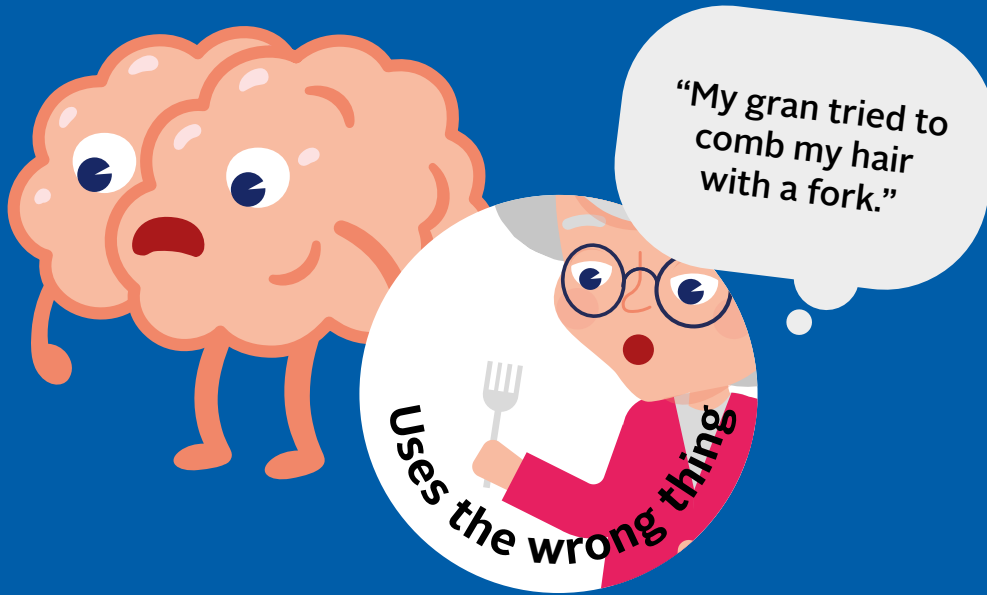


4TH - 6TH GRADE

IF THE BRAIN HAS DEMENTIA



IF THE BRAIN HAS DEMENTIA



IF THE BRAIN HAS DEMENTIA



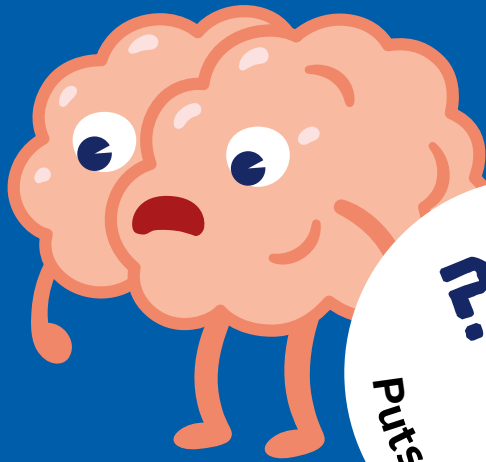
“At breakfast my granddad pointed at the milk and said ‘cress’.”

Horse



Says the wrong words

IF THE BRAIN HAS DEMENTIA



“Last winter my gran used socks as gloves.”

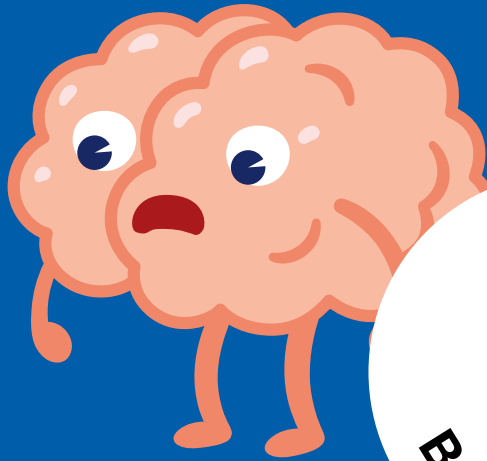
R.

Puts clothes on wrong



4TH - 6TH
GRADE

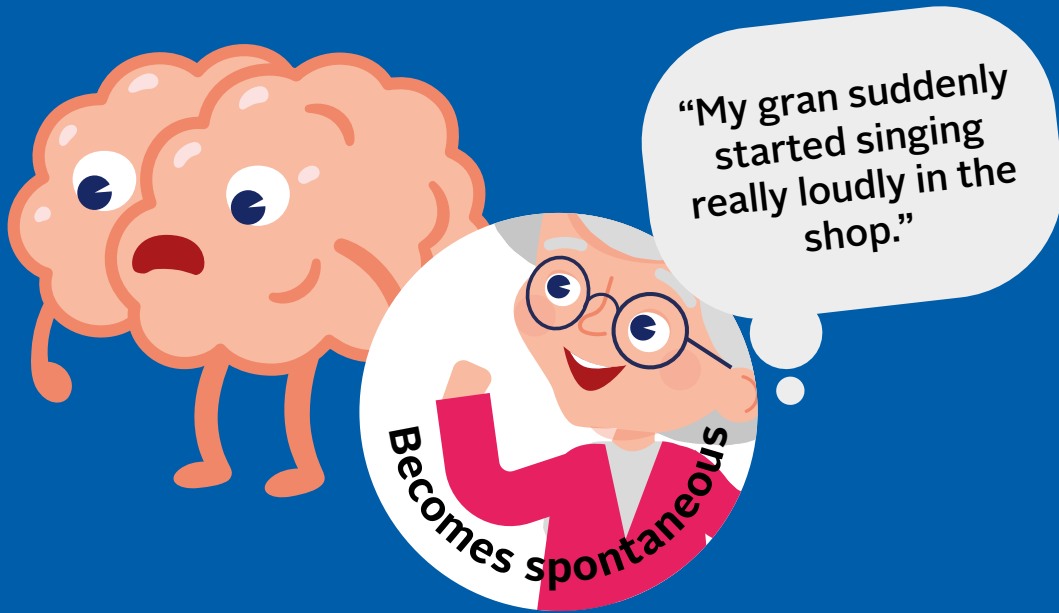
IF THE BRAIN HAS DEMENTIA



Becomes still

“Granddad sits a lot staring into empty space - as if he does not see I am there.”

IF THE BRAIN HAS DEMENTIA



WHAT DOES IT FEEL LIKE TO HAVE DEMENTIA?

otiom[®]

 SUNDHEDSSTYRELSEN

 Aalborg
Kommune

4TH - 6TH
GRADE

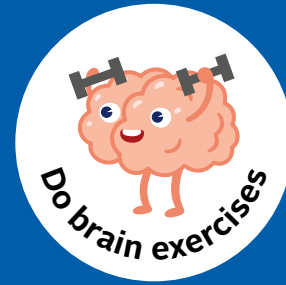
**DEMENTIA
FOR ALL**
 THE BIG AND
THE SMALL

WHAT CAN GRANDMOTHER STILL DO?



4TH - 6TH
GRADE

TAKE CARE OF YOUR BRAIN



HOW CAN YOU HELP SOMEONE WHO HAS DEMENTIA?



FOUR GOOD TIPS

- Make eye contact before you begin to speak – so look up from your smartphone. 😊
- Ensure where you are is not noisy - so switch off the television when you talk.
- The good old days is always a good subject to talk about.
- Ask one question at a time and wait for the answer – be patient and give them time.

PSST...

You can also make a task where you try to be someone who has dementia (see the task sheet).